



SOLID TO SUCCEED



WWW.XCMGGLOBAL.COM
XCMG OFFICIAL WEBSITE

XCMG European Sales and Services GmbH

Europark Fichtenhain B4, 47807 Krefeld, Germany
Email : info@xcmg-ess.de



XE215EV

Electric Excavator



Operating weight 23500kg

Bucket capacity 1.05m³

Rated power 120kW



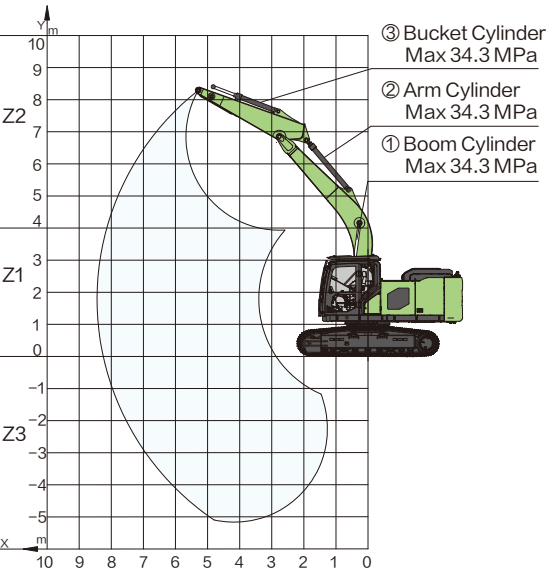
SOLID TO SUCCEED

Applications : Urban construction, mine construction, cargo yard loading and unloading, metal smelting and cleaning, tunnel construction.

Features : Using high-safety lithium iron phosphate batteries, IP67 protection components, permanent magnet synchronous motors, equipped with 10-inch touch screens and high-definition cameras, supporting multiple attachment modes and automatic lubrication, strengthening structural design to ensure efficient, stable, and low-cost operation.

Never attempt to lift or hold any load in excess ofthe rated lifting capacity at the specifiedlifting radius and height. The lifting point is located on the lifting eye ofthe arm(Bucketweight is not included), any additional attachment such as bucket should be deducted fromthe lifting weight. When determining the net lifting weight allowed for the machine, theweight ofthe slings and any auxiliary lifting.devices must be deducted from the rated liftingcapacity. Lifting capacity is based on the machine standing on firm and level ground. Theoperator should consider working conditions such as soft oruneven ground. Beforeoperating the machine, the operator should familiarize himself with the safety procedures inthe relevant manual.

kg											
Dozer Blade up											
In travel direction				Against travel direction				Right angle to travel direction			
Y	X	3.0m		4.5m		6.0m		7.5m		MAX	
											m
Z2				*4750	*4750	*4050	*4050	*4250	3450	*4250	2950 8.10
Z1				6850	6450	*5350	4350	*4650	3150	*4450	2650 8.40
Z3		*5550	*5550	*6250	*6250	*5650	4250	*5150	3150	4750	2750 8.00



Note 1 The lifting capacities in the table refer to the case where no external thrust intervention is included.

Note 2 Lifting capacities marked with an asterisk (*) in the table are limited by hydraulic capacity and should not exceed 75% of the minimum tipping load or 87% of the hydraulic capacity.

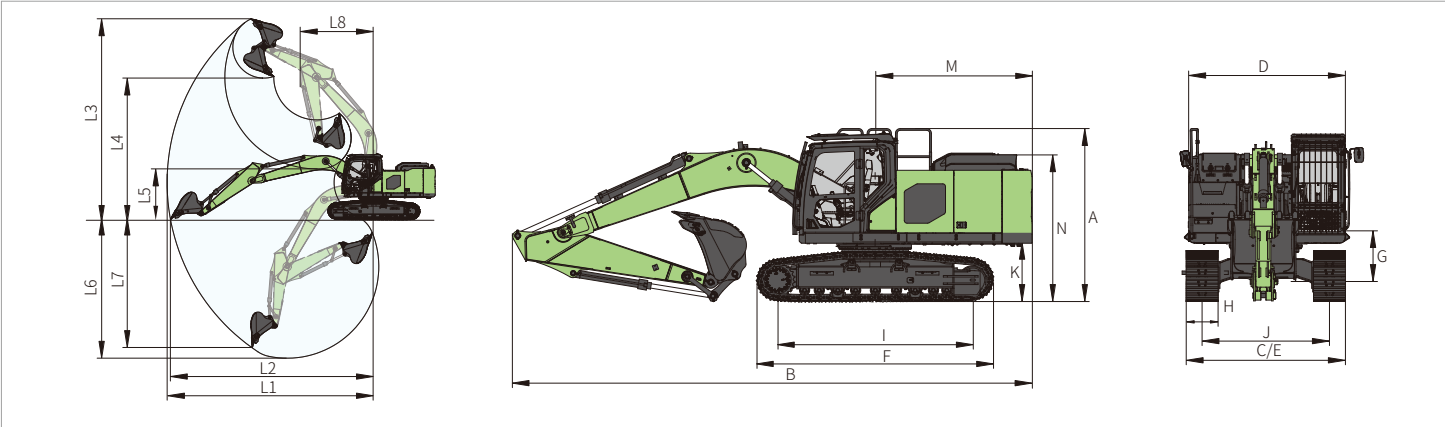
Note 3 The least stable position is on the side of the excavator.

Note 4 The lifting capacity table applies only to machines originally built and normally assembled by the manufacturer.

Note 5 The machine is rated for an operating mass of 23500 kg (51809 lb) when lifting. Included in this mass are 0.6m (1.97 ft) steel crawler, 5.68 m (18.64 ft) boom, 2.91m (9.55 ft)arm, 1600kg (3527 lb) counterweight, all working fluids, and a 75 kg (165 lb) operator, exclusive of the bucket.

Note 6 Lifting capacity shall be in accordance with ISO 10567:2007.

Note 7 For all configurations of track specifications, the lifting capacity is kept within ± 5%.



Item contents	Unit	Parameters
Working range		
L1	Maximum reach	mm 9940
L2	Maximum reach at GRP	mm 9800
L3	Maximum digging height	mm 9620
L4	Maximum unloading height	mm 6780
L5	Minimum unloading height	mm 2420
L6	Maximum vertical digging depth	mm 6145
L7	Maximum digging depth	mm 6680
L8	Minimum swing radius	mm 3530

Item contents	Unit	Parameters
Dimensions		
A	Overall height	mm 3145
B	Overall length	mm 9720
C	Overall width	mm 2990
D	Upper structure width	mm 2940
E	Chassis width	mm 2990
F	Track length	mm 4440
G	Track height	mm 940
H	Standard track shoe width	mm 600
I	Track wheelbase	mm 3649
J	Track gauge	mm 2390
K	Counterweight ground clearance	mm 1100
L	Minimum ground clearance	mm 490
M	Tail swing radius	mm 2950
N	Hood height	mm 2772

Item contents	Unit	Parameters
Operating weight	kg	23500
Engine		
Electric motor type	-	Permanent magnet motor
Rated power/rpm	kW/rpm	120/1895
Protection class	-	IP68
Insulation class	-	H
Cooling method	-	Liquid cooling

Battery pack		
Battery type	-	Lithium iron phosphate
Battery voltage	V	618
Battery capacity	kWh	422.87
Fast charging time	h	1.5
Fast charging power	W	247200
Heating method	-	Hydrothermal
Cooling method	-	Liquid cooling

Track		
Standard track shoe width	mm	600
Number of track shoes (per side)	-	49
Number of track roller (per side)	-	9
Number of track carrier roller (per side)	-	2

Cab standard		
ISO 12117-2: 2008 (ROPS)	-	√

Item contents	Unit	Parameters
Hydraulic system		
Main pump	-	Two variable pumps
Pilot pump	-	Gear pump
Maximum flow rate of main system	L/min	2 × 216
Main system pressure	MPa	34.3
Main system pressure (power-max pressure)	MPa	37
Pilot system pressure	MPa	3.9
Travel system pressure	MPa	34.3
Swing system pressure	MPa	28
Hydraulic oil tank capacity	L	150

Main performance		
Travel speed (high/low)	km/h	5.4/3.3
Swing speed	r/min	12
Maximum swing torque	kN·m	70
Gradeability	-	35° (70%)
Ground specific pressure	kPa	46.2
Bucket digging force (SAE)	kN	149
Arm digging force (SAE)	kN	111
Maximum traction force	kN	200

Standard		
Length of boom	mm	5680
Length of arm	mm	2910
Bucket capacity	m³	1.05 (Reinforced bucket)

Optional		
Length of boom	mm	-
Length of arm	mm	-
Bucket capacity	m³	1.2 (Earthmoving bucket)