



XC975-EV

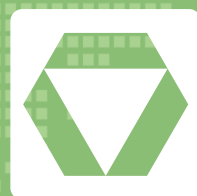
ELECTRIC WHEEL LOADER



Operating Weight 22800kg

Bucket Capacity 4.5m³

Rated Power 320kW



SOLID TO SUCCEED



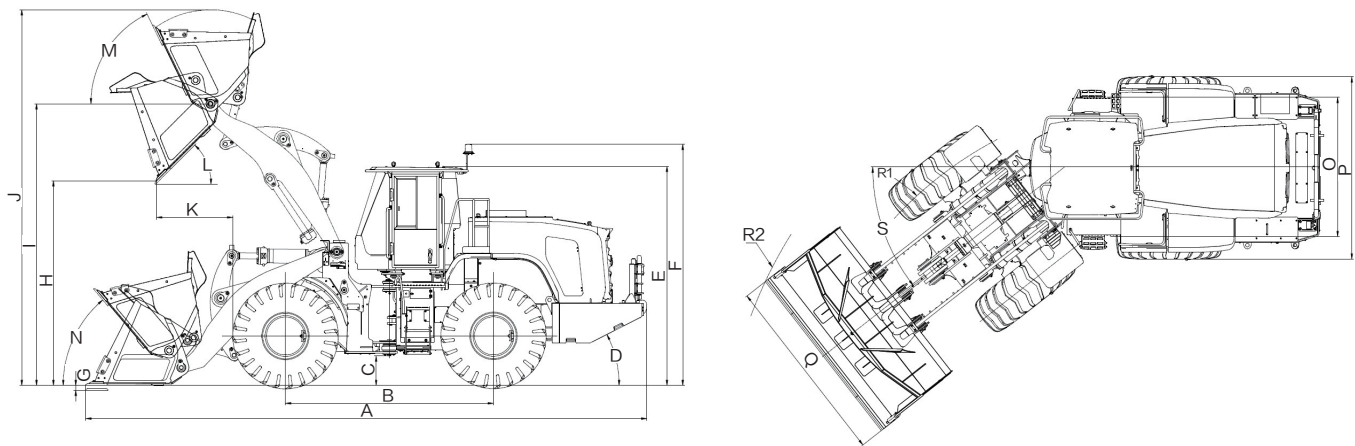
XCMG OFFICIAL WEBSITE

Add:No. 99 Kunpeng North Road, Economic and Technological
Development Zone, Xuzhou City, Jiangsu Prvince
Zip code:221122

Version:N202505V1



MAIN SPECIFICATIONS



	Dimension and Specification	Parameter
A	Overall length	9310 mm
B	Wheelbase	3450 mm
C	Min. ground clearance	490 mm
D	Departure angle	27°
E	Height: ground to cab	3575 mm
F	Height: ground to beacon	4000 mm
G	Digging depth	50 mm
H	Dumping height	3410 mm
I	Height to hinge pin, fully raised	4670 mm
J	Max. lifting height	6370 mm
K	Dumping reach	1285 mm
L	Dumping angle	45°
M	Rollback angle at full lift	64°
N	Rollback angle (transfer)	43°
O	Wheel track	2320 mm
P	Width over tyres	2990 mm
Q	Bucket width	3100 mm
R1	Turning radius: tyre centerline	6160 mm
R2	Turning radius: over bucket	7200 mm
S	Steering angle	38°

• The technology of XCMG electric wheel loaders is subject to constant improvement and upgrading. In case the specifications or detailed appearance contained in this brochure differ from actual products, the latter shall prevail.

• XCMG reserves the right of final interpretation for the above. Our products may be modified without prior notice to users.

Category	Type	Parameter
Overall Parameter	Operating Weight	22800 kg
	Bucket Capacity	4.5 m ³
	Rated Load	7000 kg
	Max Breakout Force	180 kN
	Tipping Load	Straight ≥ 16000 kg Fully articulated ≥ 14000 kg
Battery& Motor	Overall Voltage	618 V
	Max Rated Output Power	320 kW
	Max Output Power	630 kW
	Max Rated Output Torque	2000 N · m
	Max Output Torque	6400 N · m
	Battery	LFP Battery
	Battery Voltage	618 V
	Electrical System Voltage (Low)	423 kWh
	Storage Battery Voltage	24 V
	Storage Battery Capacity	24 V
	Battery Capacity	120 Ah
Hydraulic Working System	Charging Time	240 kW-90 min 320 kW-75 min
	Type	Fixed
	Pump	gear pump
	Rated Flow	443 L/min
	Control Valve	Standard hydraulic control multiway valve
	System Pressure	22 MPa
	Total Circle Time	≤ 10.6 s
Axle	Type	Four-wheel drive
	Front Axle	Fixed
	Rear Axle	Oscillating frame type/with 10.5 ° oscillating angle to each side
	Reduction Gear	Planetary final drive
	Differential	Conventional differential
Steering Hydraulic System	Type	Flow amplifier steering system
	Pump	Internal gear pump
	Rated Flow	110L/imin
	Hydraulic Cylinder	2
	System Pressure	19Mpa
	Max. Steering Angle	38°