



XC968-EV

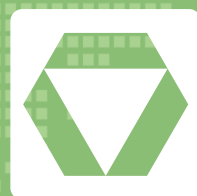
ELECTRIC WHEEL LOADER



Operating Weight 10940/19370/21110kg

Bucket Capacity 3.2m³

Rated Power 320kW



SOLID TO SUCCEED



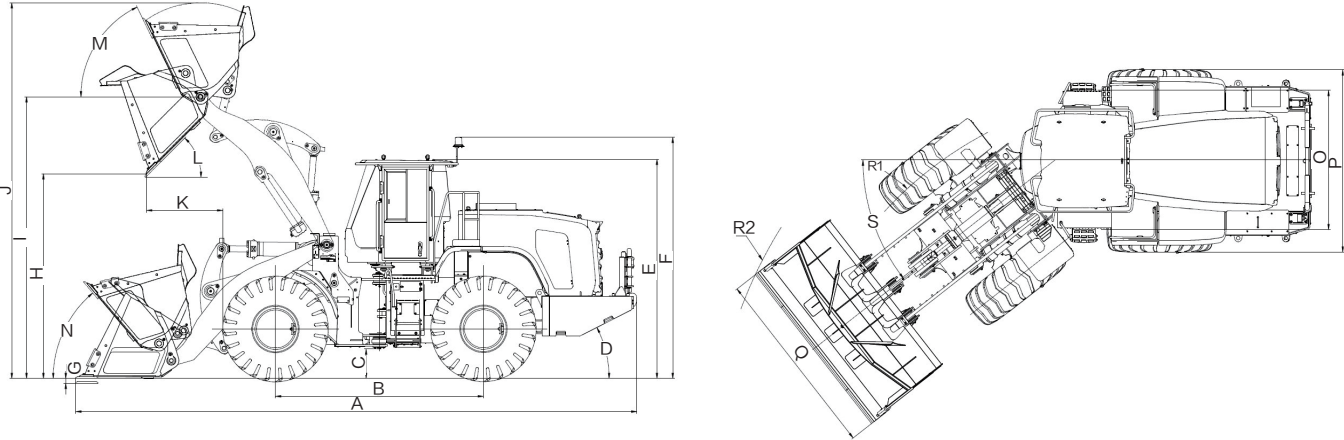
XCMG OFFICIAL WEBSITE

Add:No. 99 Kunpeng North Road, Economic and Technological
Development Zone, Xuzhou City, Jiangsu Prvince
Zip code:221122

Version:N202505V1



MAIN SPECIFICATIONS



	Dimension and Specification	Parameter
A	Overall length	9130 mm
B	Wheelbase	3450 mm
C	Min. ground clearance	425 mm
D	Departure angle	27°
E	Height: ground to cab	3565 mm
F	Height: ground to beacon	3930 mm
G	Digging depth	80 mm
H	Dumping height	3340 mm
I	Height to hinge pin, fully raised	4450 mm
J	Max. lifting height	5910 mm
K	Dumping reach	1185 mm
L	Dumping angle	45°
M	Rollback angle at full lift	63°
N	Rollback angle (transportation)	43°
O	Wheel track	2255 mm
P	Width over tyres	2850 mm
Q	Bucket width	2996 mm
R1	Turning radius: tyre centerline	6160 mm
R2	Turning radius: over bucket	7050 mm
S	Steering angle	38°

- The technology of XCMG electric wheel loaders is subject to constant improvement and upgrading. In case the specifications or detailed appearance contained in this brochure differ from actual products, the latter shall prevail.
- XCMG reserves the right of final interpretation for the above. Our products may be modified without prior notice to users.

Category	Item		282kWh	350kWh	423kWh
Overall Parameter	Operating Weight		19040 kg	19370 kg	20110 kg
	Bucket Capacity		3.2 m³		
	Rated Load		6000 kg		
	Max. Breakout Force		≥ 180 kN		
	Tipping Load	Straight	≥ 13544 kg		
		Fully articulated	≥ 12000 kg		
Motor&Battery	Max. Rated Output Power		270 kW		
	Max. Rated Output Torque (Travel)		2000 N · m		
	Max. Output Torque (Travel)		6000 N · m		
	Battery Type		LFP		
	Battery Voltage		618 V		
	Battery Capacity		282 kWh	350 kWh	423 kWh
	Electrical System Voltage (Low)		24 V		
	Low Voltage Battery Capacity		240 Ah		
	Charging Time		282kWh–240 kW–60 min (approximately)		
			350kWh–240 kW–80 min (approximately)		
Hydraulic Working System	Type		Constant pressure hydraulic system		
	Pump		Internal gear pump		
	Max. Flow		400 L/min		
	System Pressure		20.5 MPa		
	Total Circle Time		≤ 9.7 s		
Axle	Type		Four–wheel drive		
	Front Axle		Fixed		
	Rear Axle		Oscillating frame type/with 12° oscillating angle to each side		
	Reduction Gear		Planetary final drive		
	Differential		Conventional differential		
Steering Hydraulic System	Type		Flow amplifier steering system		
	Pump		Internal gear pump		
	Max. Flow		210 L/min		
	Control Valve		Third function multiway valve		
	System Pressure		19 Mpa		
Maintenance	Front Axle		47 L		
	Rear Axle		26.5 L		
	Coolant		45 L		
	Hydraulic Oil		120 L		